

 **Boole Server™ 3.0**

## Maximum security for your sensitive data

*Introducing the secure platform for collaboration and sharing of sensitive and confidential information*

***Boole Server is a secure, scalable system designed to safeguard any sensitive data, while allowing it to be shared with staff, partners and customers as and when needed. It ensures that data cannot be stolen or lost in transit or on the server, and that only authorised recipients can use, edit or view specific files.***



### Minimise risk

Whenever sensitive, strategic or highly confidential information needs to be exchanged, discussed or edited, Boole Server allows businesses to address their information sharing and collaboration needs without compromising the safety and security of their data. The technology incorporates a range of advanced safety measures to keep confidential and sensitive data totally secure, including strong 2048 bit encryption.



### Maximise productivity

Inside the Boole Server vault, authorised users can be granted quick, easy and totally secure access to the information they need to do their jobs effectively. Staff, partners or customers can be given selective and temporary rights to see or to edit data. Organisations can rely on the system to ensure that their information will not be forwarded, stolen or lost, either through malicious action or human error.



### Control your data

Each owner of a file can give authorisation to specific groups or individual users, to view, print, copy or modify files. Authorisation can also be limited by location or by time, allowing authorised users to access or view a file for a period of several weeks or just a few seconds. Boole Server keeps records of everything that happens to each file and the activity of each user, allowing organisations to run audits whenever they are required, for internal knowledge or for compliance needs.

---

## Protection without restrictions

---

On any given day, most of the information within your organisation is laying dormant, waiting for the moment it is needed. When that moment comes, the data must be there at your fingertips.

Yet your confidential information is attractive to others all the time. Those who wish you ill or would like to gain a competitive advantage are potentially interested in your data any time they can gain access to it. The challenge is to keep sensitive information securely locked down while making it available to legitimate users when and where they need it.

The Boole Server platform overcomes the apparent contradictions in this situation by offering multi-layered security combined with effortless, transparent access for those who are authorised to see, use or modify the data.

In today's complex business networks, these authorised users could also be external,

such as suppliers or customers, consortium members or M&A advisers, distributors, law firms, patent agents, design teams or any number of other actual or potential business partners.

All of these need to be trusted with confidential information, to a greater or lesser extent. Boole Server lets you reveal only what you want to show, to precisely those who need to see it, only when they need to see it and for exactly the length of time you specify – with strict limitations on what they can do with the information.

---

## Access without risk

---

Boole Server works by effectively keeping the sensitive information inside a secure vault, while making it instantly available, through a simple, browser-style interface, to those who have been given the right by each file owner to see it or to copy or edit it. Within your organisation, authorised users can be given exactly the access rights and restrictions that are appropriate for the situation – as defined by location, by date and time, by group or at individual level. Outside the organisation, customers, suppliers, advisers or partners can be given a temporary “window” to let them glimpse the information or study it in more depth. What they are seeing is a time-limited rendered image of the information, rather than the data itself, so they cannot copy, download or manipulate it without your

express permission.

If you decide you do want to give privileged business partners the right to download a file, this can be prominently and permanently watermarked, so that any leaked files can immediately be traced back to their source.

## A tool for efficiency

Besides making handling sensitive data totally safe and secure, Boole Server makes your team's work more efficient and productive. Filing, sharing and collaboration on documents is as quick and efficient as it is safe. Earlier versions of modified files can be saved automatically, making change management and recovery simple and reliable. The server keeps records of every action taken by every user affecting every file, making it simple to run audits at any time for internal use or to meet compliance requirements.

At the system level, besides powerful encryption, detailed reporting of system activity and instant system hardening, Boole Server provides robust enterprise ready features, such as mirroring, load balancing and fail-over.

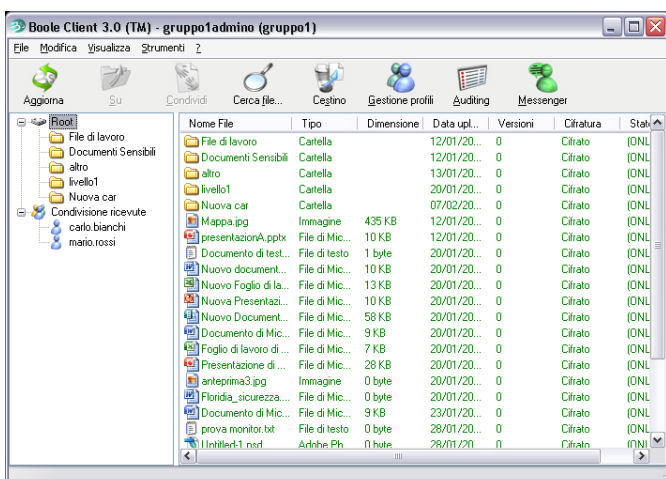
Security is addressed on many different levels, incorporating a wealth of real-world experience that includes hacking, port-scanning attacks and problems caused by careless or disgruntled employees.

The data encrypted within Boole Server and the information in transit between the server and the client are not accessible to anyone, not even System Administrators, unless they have been specifically authorised by the

file's owner. The system is designed so that any user is only aware of the existence of the content he or she is authorised to view, access or edit. All other files are invisible, making it impossible for anyone to attempt to reach unauthorised information.

Boole Server can be installed on any Windows-based server and supports most common network management software. It is also highly adaptable to the needs of specialised business fields, thanks to the Boole Server Software Development Kit (SDK). The kit allows in-house development of new endpoint applications, customised desktops, reserved areas within websites, online storage services, message exchange systems and many other exciting features.

Client application

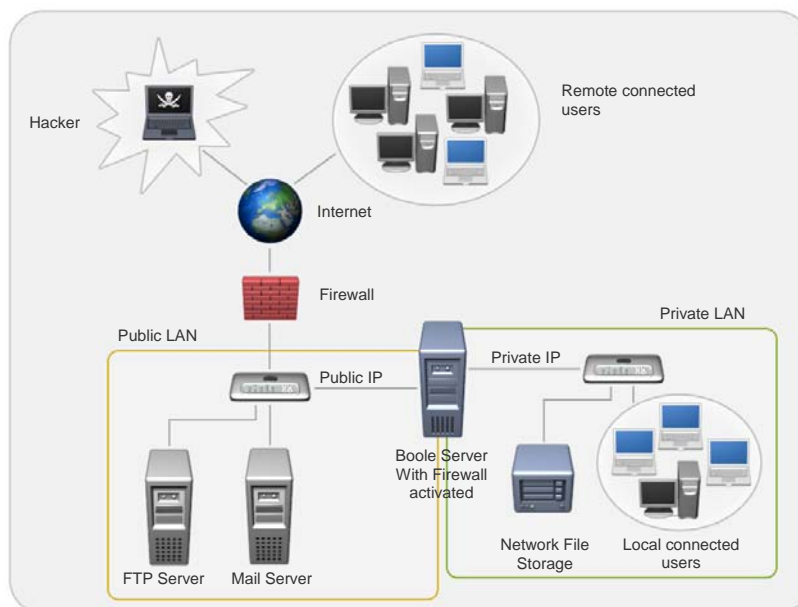


Watermark



## Technical Details

- Boole Server is based on coded data transfer and storage, using strong 2048 bit encryption. It enables risk-free resource sharing in encrypted format, since files are directly managed by the software and not by the operating system. The encryption system can be applied to disks shared through Windows Active Directory.
- Access is managed via a simple, familiar and intuitive Windows-like interface.
- Boole Server's software uses one single connection channel. The firewall can restrict all other connecting ports on the network, with a single command used to harden the entire system within seconds to mitigate external threats.
- Disaster recovery units can be configured to make constantly updated copies of the system's primary storage units on servers in separate physical locations.



## System Requirements

	SERVER SIDE	ENDPOINT
<b>Operating system</b>	Windows 2000 Windows 2000 server Windows XP Professional Windows 2003 server - <i>recommended</i> Windows 2008 Server Windows 2008 Server R2	Microsoft Windows 2000 Microsoft Windows XP Microsoft Windows 2003 Server Microsoft Windows Vista Microsoft Windows 7
<b>Ram</b>	512 MB 1 GB - <i>recommended</i>	128 MB
<b>Hard drive space</b>	30 MB	5 MB
<b>Network adapter</b>	10/100 Mbit 1 Gbit - <i>recommended</i>	10/100 Mbit 1 Gbit - <i>recommended</i>
<b>CPU</b>	Compatible Pentium Processor	Compatible Pentium Processor

BUSINESS NEED	BOOLE SERVER FEATURE	SOLUTION DETAILS
Protect data during transmission and storage	<b>Military-strength 2048 bit encryption</b>	Stored data cannot be accessed. Data in transit cannot be intercepted. Encrypted data cannot be attacked by viruses.
Control access to sensitive or confidential data files	<b>Selective and granular user restrictions policies</b>	Authorised users have privileged access, but only to appropriate data and only for the appropriate time. A user can be allowed to edit, download or just view a file for a few seconds. System administrators cannot view its data content.
Ensure users can manage all files from a single browser	<b>Remote Drive Service</b>	Boole Server can carry out a mapping of all LAN resources, then synchronise full or partial content of each disk to make it accessible to users through its interface.
Minimise staff training when rolling out new security processes	<b>Intuitive interface and integration with Windows</b>	The Boole Server user interface and features have been designed to look and feel familiar, intuitive and integrated with Windows, minimising any training requirements.
Ensure data cannot be forwarded, damaged or stolen by users	<b>Blocking of external copying and PrintScreen</b>	Practical security features ensure that data cannot be taken anywhere further than an authorised user's sight. Boole Server blocks accessing, editing and printing of data files independently from the fact that they are saved in local, sent as attachment in an e-mail or copied on external storage devices, such as USB sticks, CDs, DVDs, external hard disks or iPods, and disables other methods of copying such as Print Screen.
Manage access permissions and handling of confidential files	<b>File control and access restriction management</b>	Boole Server empowers the owner of each file to define who can have access to it, when, and to do what. Every action performed on a file can be automatically reported to the owner, and every document deleted is kept in the vault for recovery.
Open files or reveal information in an external or insecure environment	<b>Single-use temporary password</b>	When entering an external or insecure environment where they will need to access the Boole Server vault, a single-use password that will only work once, and therefore cannot be stolen for later use by others, can be configured.
Track data handling and run audits	<b>Automatic auditing and file access alerts</b>	Boole Server allows administrators to track the handling of data any time, guaranteeing records of all activity within the system may be retrieved for compliance monitoring or internal audits in just a few clicks. Users may also request to receive alerts when their files are viewed, edited or deleted.

BUSINESS NEED	BOOLE SERVER FEATURE	SOLUTION DETAILS
Track versions of files, back-up data and ensure only relevant data is used within and outside the company	<b>Automated housekeeping and file synchronisation</b>	Boole Server can track and synchronise the various versions of a file, run back-up, carry out file log registration and automatically delete files from a user's desktop after they are uploaded on the vault.
Avoid and track accidental or deliberate leaks of information	<b>Watermarking, IP filtering and file visualisation streaming</b>	A data file can be shown to authorised recipients as a file preview, a streamed image of the file, for just a few seconds. This image can be prominently and indelibly watermarked, so that the source of a data leak can be traced. Boole Server can also identify and filter IP addresses to ensure the data can only be viewed in specific locations.
Confidential and secure instant communication	<b>Secure instant messaging</b>	Provides an easy, risk-free way of communicating with staff, partners or customers, with the certainty that nobody can view the conversation, not even system administrators.
Minimise overheads and ensure scalability	<b>Scalable, flexible and seamless integration with existing IT infrastructure, including interfacing with SAP systems</b>	Boole Server is relatively simple to deploy, integrates fully with your existing infrastructure, and can scale without the need for any reconfiguration. Its flexibility and integration with systems such as SAP make it a very low latency platform.
Continuity and High Availability	<b>Load balancing, fail-over, mirroring and disaster recovery</b>	Boole Server's load balancing, fail-over, mirroring and disaster recovery capabilities protect your data in case of overload, breakdown or disaster, like most of the best file servers in the World.

*\* Please note some features are only available in Boole Server Enterprise Edition*

ADDITIONAL FEATURES		
BUSINESS NEED	BOOLE SERVER FEATURE	SOLUTION DETAILS
Customize appearance, develop applications and integrate with other systems	<b>Software Development Kit (SDK)</b>	The Boole Server Software Development Kit allows in-house development of new endpoint applications, customised desktops, reserved areas within websites, online storage services, message exchange systems and integration with other applications to fit specific needs.